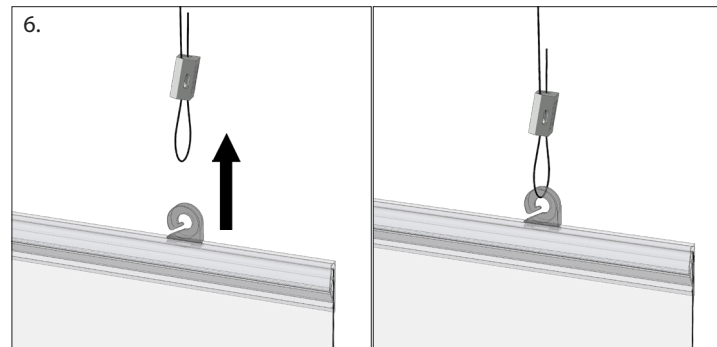
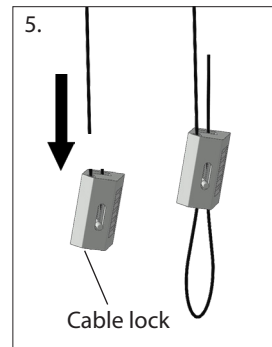
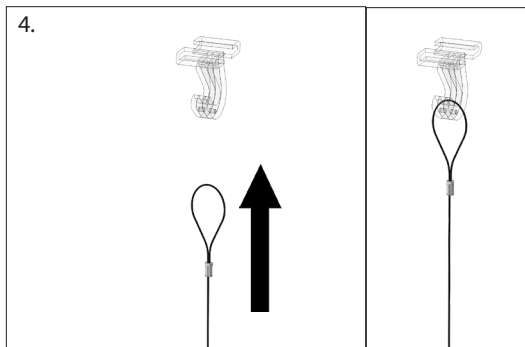
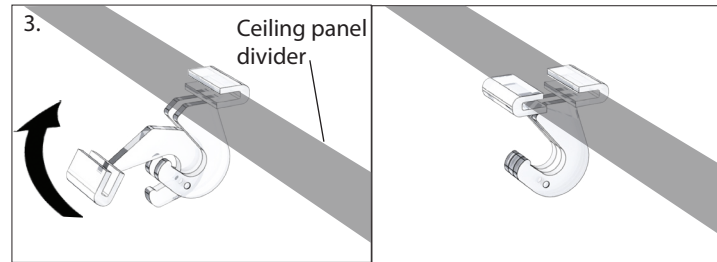
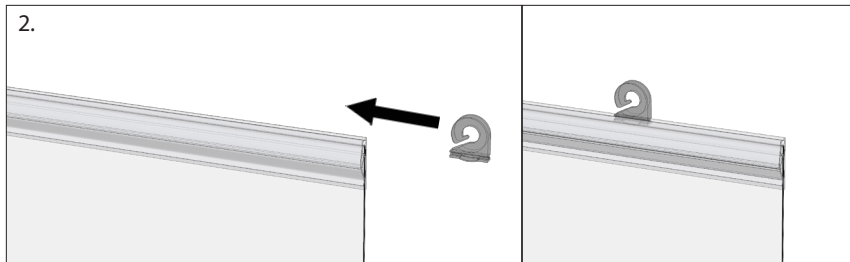
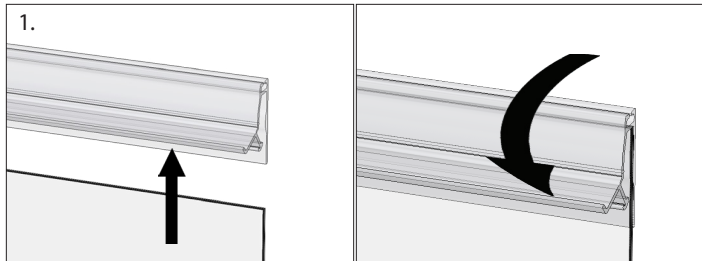


Hanging Shield™ - GCHS Series

1. Insert clear lens into upper gripper and clamp into place. Repeat for lower gripper.
2. Slide hanging clips directly into top channel of gripper.
3. Attach ceiling hook first by swiveling open the two sides of each hook. Engage each side of the hook over the ceiling panel divider, then firmly swivel the hook sides closed to clamp around the ceiling panel divider completely.
4. Hang looped end of the cable pair to ceiling hooks.
5. Feed the free end of each cable through the spring loaded cable lock and adjust to required length.
6. Hang the gripper hooks to the cable pair.



GCHS-2822 shown