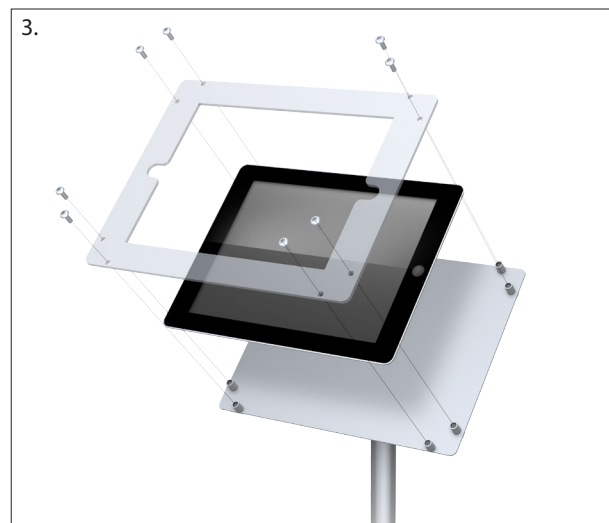
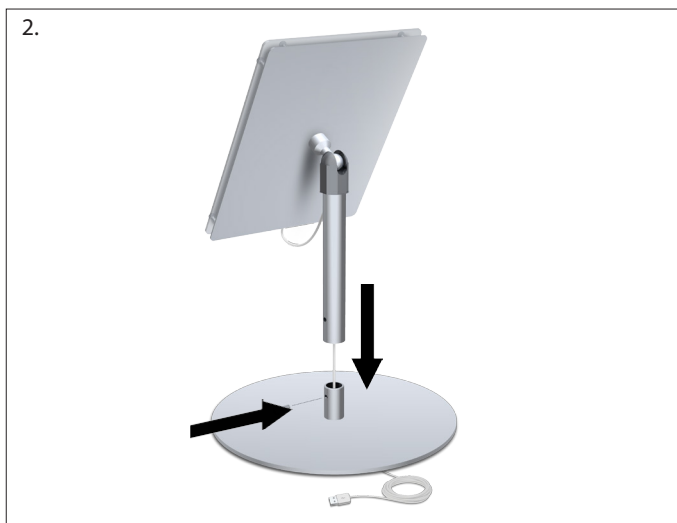
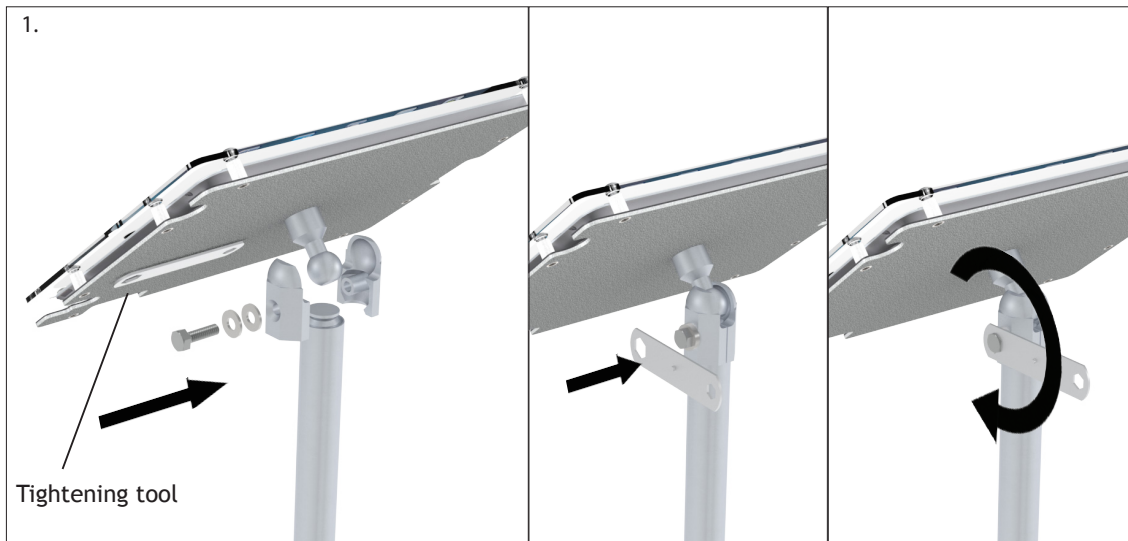


Classic Pro Tablet Stand™ - IPDTR Series

1. Attach the Tablet casing to the upright as shown below using the bolt and washers provided. Use the magnetic tightening tool provided to tighten the bolt.
2. Align upright over base and slide cord through upright and then through the base. Slide upright over base bushing, align holes, and screw into place to secure
3. Remove acrylic cover using small tamper-proof key provided. Place tablet inside and reassemble unit.



IPDTR-S shown