

Gripper Bars (EasyGraphics™)

Applicable Products:

EA Series

1. Insert graphic (up to .093" thick) into open EasyGraphic™ gripper (fig. A-1 & A-2).

If hanging from ceiling:

2a. Insert EasyGraphic™ gripper into EasyGraphic™ gripper bar (fig. B-1).

3a. Insert hanging clips into EasyGraphic™ gripper bar top channel (top bar only) (fig. B-2)

4a. Insert endcaps into EasyGraphic™ gripper bar to complete assembly (fig. B-3 & B-4).

If mounting on a wall (EA1 and EA2 models only):

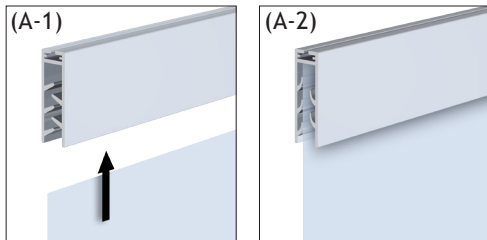
2b. Slide wall mount brackets into EasyGraphic™ gripper bar inner channel (fig. C-1).

3b. Screw wall mount brackets into the wall using screws and molly anchor provided (fig. C-2).

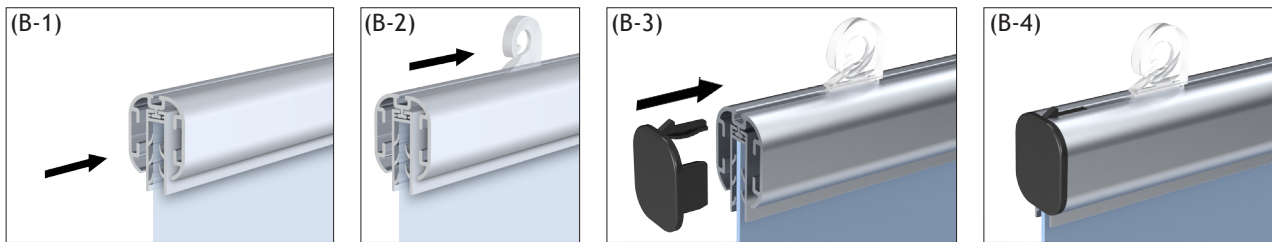
4b. Insert EasyGraphic™ gripper into EasyGraphic™ gripper bar (fig. C-3).

5b. Insert endcaps into EasyGraphic™ gripper bar to complete assembly (fig. C-4).

NOTE: EasyGraphic™ gripper bar shown below may differ from your model, but instructions remain the same.



If hanging from ceiling:



If mounting on a wall:

