

créo

Manufactured by: Testrite Visual Products



We are very proud to introduce Creo, an innovative Visual Merchandising Exhibit System featuring:

- Tool Free Assembly
Set-up designed to be intuitive, simple and fast.
- Graphics Integration
Create brand and message awareness.
- Modular Construction
Easily reconfigured to facilitate design changes.

Designed and engineered in Italy, Testrite has an exclusive license to manufacture Creo in North America.

Creo can be customized and interpreted in an infinite number of ways. Design systems best suited to your client's requirements.

Whether for point-of-sale, trade show expositions or other mobile marketing opportunities, Creo is excellent.

Creo's value proposition is compelling.

Rely on Testrite: we are celebrating our 91st year as a solutions oriented manufacturer with an extraordinary reputation for quality and service.

Use this catalog as an idea book.

The integration section demonstrates how components work by showing practical examples.

The ordering section is for identifying part numbers. Remember, custom variations are often available.

Our gallery is intended to stimulate design imagination, and our sales staff is ready to offer guidance to achieve project success.

Display Design Excellence

... a compelling value proposition.

Index

Integration		Ordering		Gallery	
Graphic Mounting	6-7	Uprights	30	Single Pole Gallery	40-43
Frames	8-9	Bases & Crossbars	31	Partition Gallery	44-45
Panels, Etcetera	10-11	Graphic Mounting	32-33	10' x 10' Booth Gallery	46-47
Accessories, Shelves	12-13	Shelves	34	10' x 20' Booth Gallery	48
Tables	14-15	Tables	35	10' x 30' Booth Gallery	49
Crossbars, Towers	16-17	Brackets	36	Large Exhibit Booth	50
Video	18-19	Accessories	37	Structures	51
Crowd Control	20-21	Frames	38		
Garment Hanging	22-23	Options	39		
Perimeter, Floor-to-Ceiling	24-25				
Podiums	26-29				

DESIGN

creo



From large integrated rollouts ...

TOOL FREE **creo**



2 minute assembly without tools!



... to simple stands.

GRAPHCIC

creo

Fabulous
Graphic
Integration



Panel Grippers

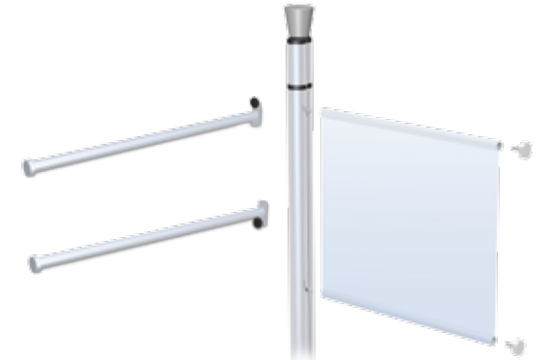
Allows frameless graphic attachment of rigid substrates. 9 available thicknesses.



Snap first part in & slide together with graphic between.

Graphic Rods

Sleek tubes tighten anywhere along track. Aluminum face-out. Hem graphics to mount.



Pocket Arms

Hem graphics to mount, includes moveable mounting glides.



Aluminum Clamps

Beautiful satin anodized clamps with protective rubber inserts.



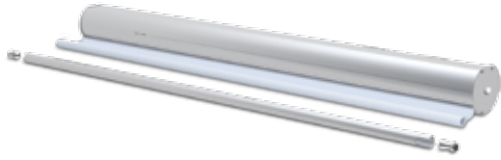
MOUNTING



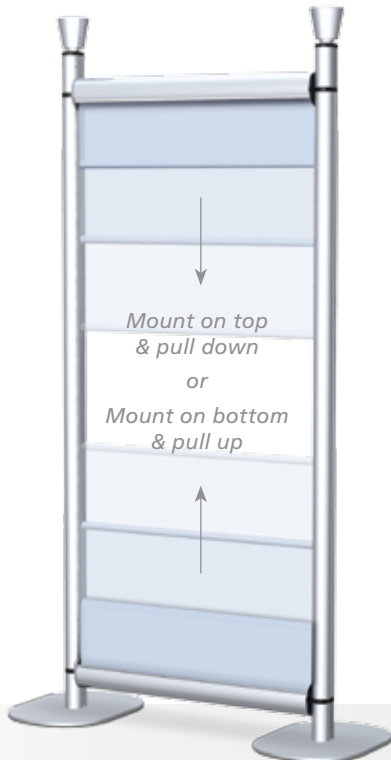
Tool
Free
Assembly!

Retractable Graphic Crossbar

Combination retractable graphic holder and crossbar, hook-loop on one end and a Pocket Arm for the other.



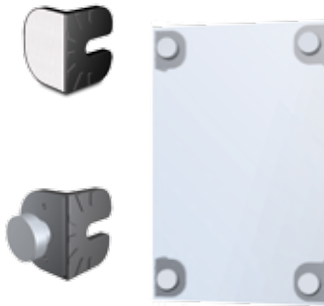
Can be top or bottom mounted.



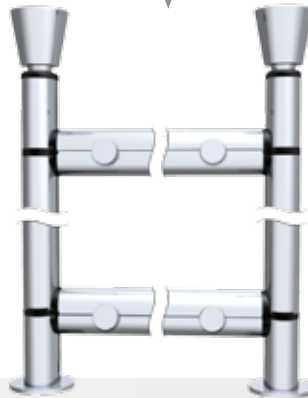
Economical, convenient
and protects graphic in transit.

Back Rests

Use Back Rests to attach rigid and semi-rigid panels with Hook & Loop or Pucks.



Puck glides and or Hook Loop
can attach graphics and panels to crossbars.



Hook & Loop Bars

Set of 2 per. Includes angle holder.
Connectors required.



Facing Front



Facing Side



ALUMINUM

creo

*Precise miters and
handsome satin finishes.*

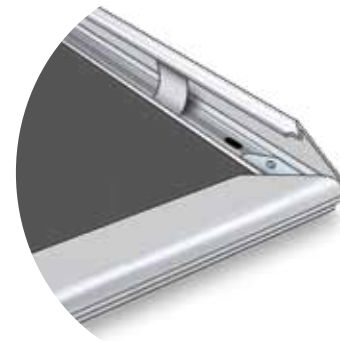


Custom models
available.



Regular Frames

Aluminum alloy frames are open on two sides
& accept graphics through a top entry slot.



Easy Open SnapFrames™

Accepts substrates up to 1/32" thick.
Opens from the front.

FRAMES

creo

*Tool Free
Assembly!*



*Frames can be hung from
crossbars as well as uprights.*



Swivel Frames

*Contemporary design
offers angle flexibility.*



*Side mount
and top mount
swivels available.*



*Frames integrate well with all
other CREO accessories.*



PANELS

creo



All kinds of Panels - Slot Wall, Pegboard, Puck Walls, Acrylic Panels are easily connectable to CREO uprights. Wood cabinetry is also easily integrated.

ET CETERA



Creo Cocktail Table



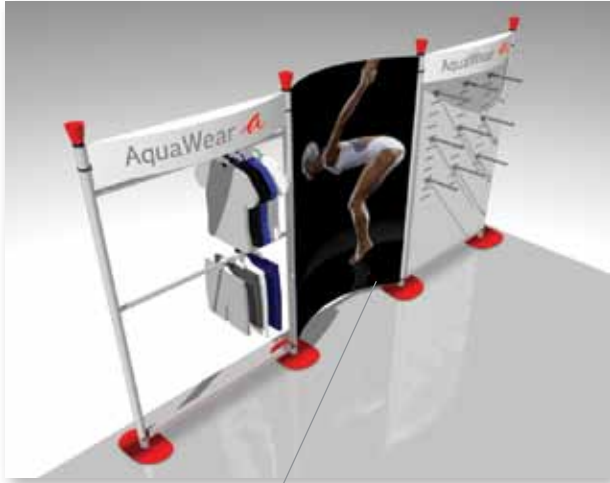
Tables can be made to accommodate client's tops.



Tabletop Stands



Tension Fabric Structures are an interesting and productive graphic element!



Flange Bases are available, so uprights can be set in concrete.

EXTRAS

créo

The right accessory can add functionality and stylish impact to your displays!



*Tool
Free
Assembly!*

Accessories include:

- | | |
|-----------------|----------------|
| Garment Holders | Vitrine |
| Shelves | Video Brackets |
| Frames | Clamps |
| Bowl | Vase |
| Lit. Holders | Lights |



All with easy graphics integration!

SHELVES



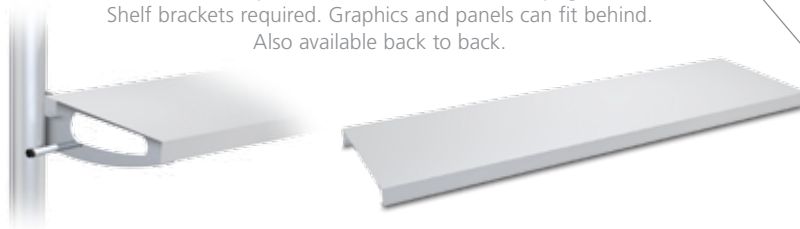
Inclinable Shelves

12" deep. Shelves tilt by engaging uprights in center. There is a lip on 1 side.



Regular Shelves

10-1/4" deep, cantilevered in front of the uprights. Shelf brackets required. Graphics and panels can fit behind. Also available back to back.



Shelf Brackets for Regular Shelves

Knob Rest Connectors included.



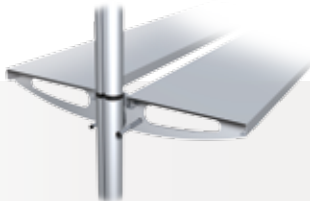
CRSB Set of 2, a left & a right Single Shelf Bracket.



CRDB Double Shelf Bracket, for center upright.

Shelf Brackets for Back to Back

Regular Shelves. Knob Rest Connectors included.



CRSBB Set of 2, a left & right bracket for back to back regular shelves.

CRDBB Double set of back to back brackets for center upright.



Graphics and panels can be positioned behind regular shelves and many other accessories.

TABLES

créo

Great for grouping similar products together.

*Often, tables are used to display wares from one particular brand or manufacturer.
Graphics and other Creo accessories afford limitless creative possibilities.*



Cafe
Style
Tables



CREO tables feature excellent strength and rigidity!



Half Round Shelves

Available in black or white melamine and clear acrylic.



Round Shelves

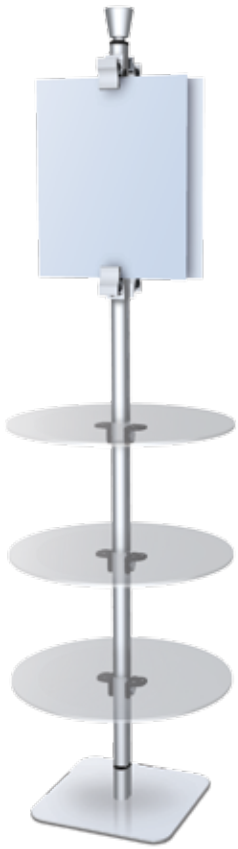
Available in black or white melamine and clear acrylic.

TABLES



Unlimited Display Options

Our tables are extraordinarily sturdy, attractive, and useful.



Acrylic Shelf Tables



Steel Shelf Tables



Staggered Half Round Tables

Tool Free Assembly!



Pyramid Tables



Square Steel Shelves

Extremely strong, multifunctional, silver powder coated.



Rectangular Steel Shelves

Offers amazing rigidity - even when several are put to one side!

PARTITIONS



Two available
crossbar styles
are available!



*All crossbars
connect tool-free.*

*Crossbars can be positioned
wherever upright sections meet.*

*Steel Button heads seat firmly
into close tolerance slots.*

Good for Classic and Pos uprights.



Angled Pivoting Crossbars are economical, requiring only one upright and base at each junction, but accessory options are limited.



Straight Crossbars require side by side uprights and bases at each junction – shelves and all other accessories can be attached.



Set Joiners used with straight crossbars allows addition of all shelf and graphic accessories. Extremely strong, made of solid metal.

TOWERS

creo

Towers are a good way to demonstrate the difference between the two crossbar styles.



Straight Crossbars require two uprights, two bases & set joiners at each junction. Our full range of accessories including shelves can be used.



Angled Pivoting Crossbars position in front or behind uprights, which can create display gaps.

Angled Pivoting Crossbars are economical, requiring only one upright and base at each junction. Use crossbar pucks and hook/loop to attach graphics.



High Towers are a cost effective trade show element because tool free assembly limits union labor costs.

VIDEO

creo



Tool-Free Assembly!



CRVA Swiveling universal monitor mount.
22" maximum monitor.
Connectors included.

Use monitors with
built in DVD players
or SD Cards.



CRVX Fixed universal monitor mount.
24" maximum monitor.
Connectors included.



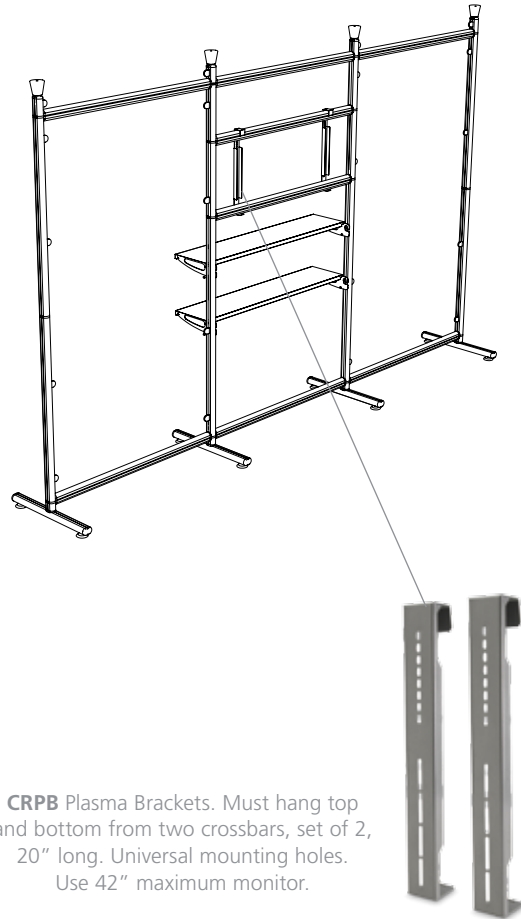
Video & graphic podium integration

*Video integration
drives sales!*

Video
Made
Simple!



Audio Visual
Media Presentations



CRPB Plasma Brackets. Must hang top and bottom from two crossbars, set of 2, 20" long. Universal mounting holes. Use 42" maximum monitor.



Simple, effective video solutions... All Tool-Free!

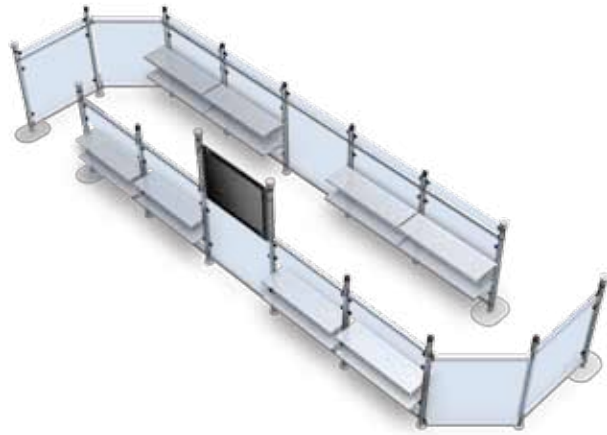
CREO

*Perfect for in line queue applications, CREO offers great exhibit & merchandising opportunities.
Extremely easy to set up. Italian designed, Made in U.S.A.
Quality & Value, Built to Last.*



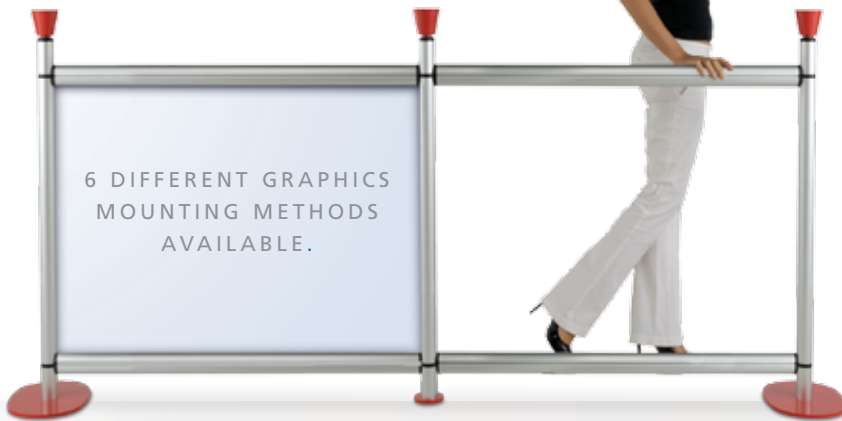
CONTROL

creo



*Stimulate
Impulse
Sales*

*Great styling
Graphic integration
Tool free assembly*



6 DIFFERENT GRAPHICS
MOUNTING METHODS
AVAILABLE.

*Graphics, signs, posts, video, panels, platforms and shelves
can be added to generate impulse sales and brand awareness.*

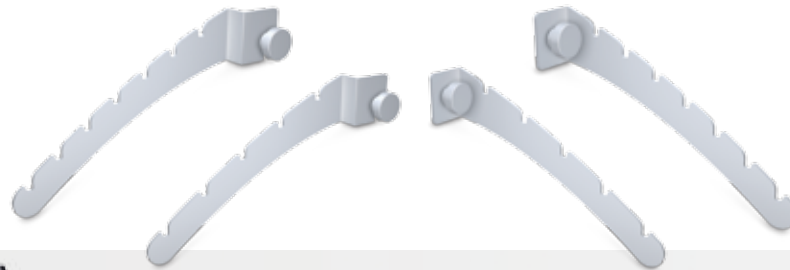
creo GARMENT

Modular system, configurable
in an infinite number of ways.



Waterfalls

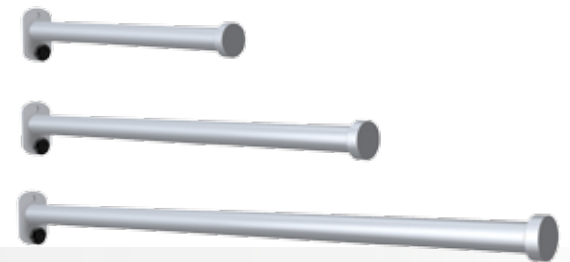
5 slot and 7 slot steel brackets for garment hangers.
Puck connection included.



Two types. Those attaching to uprights
and those attaching to crossbars.

Customer Arms

Sleek metal arms, with anodized
aluminum face-out.



Also use as graphic rods with hemmed graphics.
Three available lengths.

HANGING



Extended Garment Brackets & Poles



Singles and doubles

Center Garment Brackets & Poles



Garment hanging
with graphics integration!

PERIMETER

créo

Wall Mount Upright Assemblies

Upright Sections

Two 4" Standoffs and 3-1/4" mounting plates.
End caps top and bottom.
Units ship fully assembled.

CRUW3	36"
CRUW4	48"

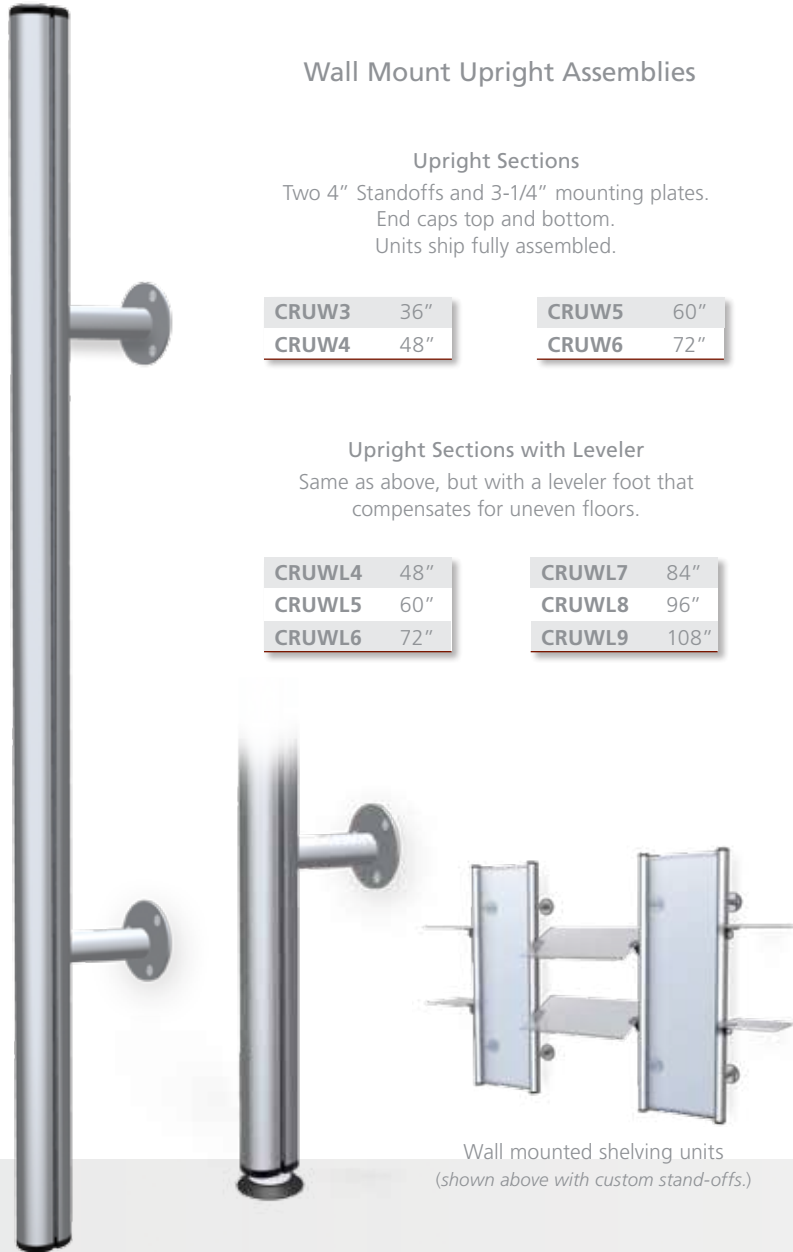
CRUW5	60"
CRUW6	72"

Upright Sections with Leveler

Same as above, but with a leveler foot that
compensates for uneven floors.

CRUWL4	48"
CRUWL5	60"
CRUWL6	72"

CRUWL7	84"
CRUWL8	96"
CRUWL9	108"



Wall mounted shelving units
(shown above with custom stand-offs.)

Limitless visual merchandising possibilities!



CREO is a superbly designed system that can be used in freestanding and wall mounted perimeter configurations.

SPANNING

creo



Floor to ceiling



Wall mount

Spanning Floor to Ceiling

Includes an end treatment on both ends.

Choose:

- P Bolt down 5" round plate with mounting holes, 3" thread length
- L 2-1/2" diameter leveler, 1" thread length
- S Metal scissors ceiling grid clip, 1/2" thread length
- C 3" diameter suction cup, 1" thread length

All end treatments are the same cost.

CRUFC8	96"
CRUFC85	102"
CRUFC9	108"
CRUFC95	114"
CRUFC10	120"

Simply add 2 designations after part # to indicate end treatments, ie:

CRUFC9-LP includes a leveler and a mounting plate.

CRUFC10-PS includes a mounting plate and a ceiling scissors clip.

CRSLO Spring Loaded Option mechanism fits between upright and end treatment. Order separately.



Spring Loaded option available.

CREO displays can be customized and interpreted in an infinite number of styles.

PODIUM créo

Furniture Quality Podiums
Italian Designed
Tool-Free Assembly



6 minute assembly without tools!

CRPK1 Podium Kits

Heavy duty elliptical shaped 1/2" thick clear acrylic top.
Contemporary oval bases, substantial crossbars.

-**PA** Includes 2 Pocket Arms for hemmed graphics:
Graphic size: 31-1/4" wide x up to 28-3/4" high.
(please add 2-1/4" top and bottom
for pole pockets, and 1/2" bleeds 4 sides).

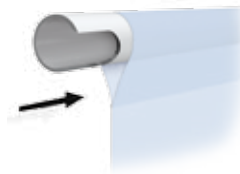
Shelf size: 36-1/4"w x 15-3/4"d
Overall size: 43-15/32"w x 43-1/2"h x 15-3/4"d.

-**PG** Includes 4 Panel Grippers for rigid graphics
- specify thickness, see chart page 32.
Graphic size: 30-1/2" wide x 28-7/8" high
(please add 1/2" bleeds 4 sides).

Shelf size: 36-1/4"w x 15-3/4"d
Overall size: 43-15/32"w x 43-1/2"h x 15-3/4"d.



CRPK1-PA



Pocket Arm



Panel Grippers





4526P1 Hard Case and Insert
 45" x 26" x 9-1/2" rugged thermoformed case.
 Has straps with buckles, handles, & built-in wheels.
 Included is a fabricated custom cut-out polyethylene insert
 with an extra corrugated tube for rollable graphics storage.

4526HC Hard Case only without inserts.



*We are pleased to quote on all your graphic requirements as well.
 Please contact our friendly sales staff.*

CRPK2 & CRPK3 Podium Kits

Both units have two Birch Platforms and mount with hook & loop. Just the hook is included with the podium, the loop comes with the graphic.
 Contemporary oval bases.

-**CRPK2** is the same but also has a 1/2" thick acrylic top shelf.

Shelf size: 36-1/4" w x 15-3/4" d
 Overall size: 43-15/32" w x 43-1/2" h x 15-3/4" d.

Graphic size: 84" w x 35-9/16" h
 (please add 1" bleeds each of 4 sides) and is designed to wrap completely around podium.



CRPK2



Hook-Loop Mount



CRPK3

creo CUSTOM



Video Integration
Two Shelves
Hook/Loop Ink-jet graphic.



Oversized laser cut steel shelf, hemmed graphics at bottom, wrap around hook/loop inkjet header, monitor mount.

All CREO accessories feature Tool-Free Assembly!



Panel Grippers hold die cut graphics, Shelf for bottle, Catalog Holder, Hook/Loop wrap around ink-jet graphic.

Custom podiums can be made to client specifications.

PODIUMS

creo

*Graphic Integration
enhances message effectiveness.
Set-up in minutes without Tools!*

Mobile Marketing Opportunities.

*Custom Podiums
Made to
client specifications.*



4526P1 Hard Case and Insert



CRPTW Extra Birch platform
with integral crossbar.



CRPTP 1/2" clear acrylic top,
shown with closures.

CRPTC Set of 2 attractive
top closures, 3-1/4" diameter.

creo TOOL FREE

CREO Classic™

Quick connect/disconnect.



Click



Click



CREO Classic

Cone Tops

< Good for Classic & Pos Styles >



Black



Silver



Red



White

CRCT Specify Color: **-B, -S, -R, -W**
Stylish and functional, Cones screw onto upright top.
A center top thread is provided for accessories.

Knob Top



CRK A non-recognizable design element at an economical price point.



Rotate

Rotate



Rotate



CREO Pos

All tops are 7" high
Most bases are 4-1/4" tall

Uprights

CREO Classic	Length	CREO Pos
CRP-72	60-3/4"	POSCR-72
CRP-84	72-3/4"	POSCR-84
CRP-96	84-3/4"	POSCR-96
CRP-18	17-5/8"	POSCR-18
CRP-36	30-3/8"	POSCR-36
CRP-42	36-3/8"	POSCR-42
CRP-48	42-3/8"	POSCR-48

Patented!

For perimeter & floor to ceiling uprights see pages 24-25.

COMPONENTS

CREO Classic & Pos Bases

Most Bases are 4-1/4" tall. Steel Bases are 1/4" thick laser cut. Aluminum Bases include oversized glides. Mounting holes and custom bases available.



Bases

CREO Classic	Description	CREO Pos
CRBD	3-1/4" Round Disc, 1-1/2 lbs.	POSCRBD
CRB5	5" Round, 2 lbs.	POSCRBR5
CRBS	16" Square, 18 lbs.	POSCRBS
CRBR17	17" Round, 16 lbs.	POSCRBR17
CRBO	10" x 14" Oval, 7 lbs.	POSCRBO
CRBK	4" x 17" Kidney, 5-1/2 lbs.	POSCRBK
Specify Color: -B , -S , -R , -W (same cost). Above bases are 4-1/4" tall.		
CRBT	24" Aluminum "T"	POSCRBT
CRBF	24" Off Center Aluminum "T"	POSCRBF
CRBP	Tripod	POSCRBP

Above bases are 5-1/4" tall.

Crossbars

Quick, easy, sure connections, wherever sections meet. Steel button heads at ends seat firmly into close tolerance slots. Good for both CREO Classic and Pos.



Width	Straight	Angled, Pivoting
24"	CRCB-2	CRAPB-2
30"	CRCB-25	CRAPB-25
36"	CRCB-3	CRAPB-3
48"	CRCB-4	CRAPB-4
60"	CRCB-5	CRAPB-5
60"	CRCB-525*	CRAPB-525*

*2 section crossbars so can fit cases.

Straight Crossbar

Angled, Pivoting Crossbar

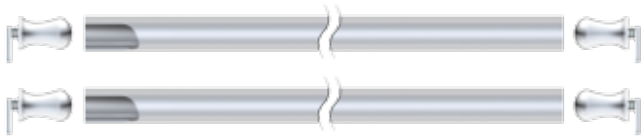
CREO Classic

GRAPHCIC



Pocket Arms

2 pole set, 3/4" diameter includes moveable glides.
Hem graphics to mount.



CRPA-2	24"
CRPA-25	30"
CRPA-3	36"
CRPA-4	48"
CRPA-5	60"
CRPA-5ST	60"*

*Made in two sections.



Pocket Arms



Graphic Rods

Graphic Rods

Sleek, 5/8" diameter tubes tighten anywhere along track.
Includes aluminum face-out. Hem graphics to mount.
Available in 18" or 24" lengths. 2 per set.



CRGR-1	18"
CRGR-2	24"

Panel Grippers

Frameless graphic attachment of rigid substrates.



CRPG interlocking,
2 pairs per.
Specify thickness.



Snap first part in and
slide together with graphic between.

Specify thickness:

0 mm	4 mm	10 mm
1.5 mm	5 mm	12 mm
2.5 mm	7 mm	15 mm



Retractable Graphic Crossbar

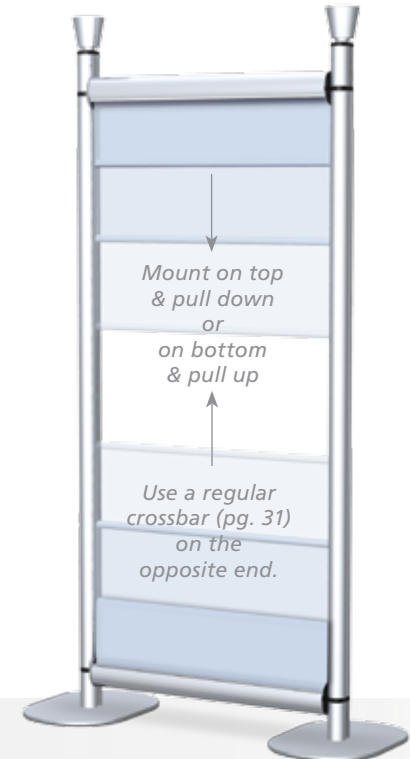
Combination retractable graphic holder and crossbar.
Includes hook-loop on one end and a Pocket Arm for the other.



Use as a top crossbar and pull graphic down,
or as a bottom crossbar & pull up.

CRPC-2	24"
CRPC-3	36"

CRPC-4	48"
CRPC-5	60"



Mount on top
& pull down
or
on bottom
& pull up

Use a regular
crossbar (pg. 31)
on the
opposite end.

Retractable Crossbars are
super convenient and economical.

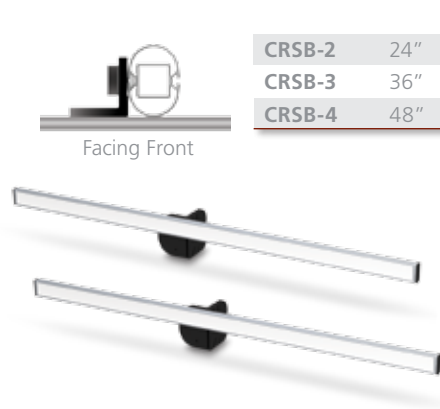
Tool
Free
Assembly!

MOUNTING



Hook & Loop Bars

Includes angle holder. Set of 2. Connectors included.



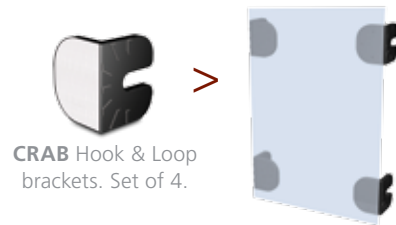
Facing Front



Facing Side

Angle Backs

Back Rests are great for attaching rigid and semi rigid substrates, such as panels. A puck connector is included with each back.



CRAH 6 position angle holder. Sold Individually.

Puck Mounts

Sometimes pucks alone can provide an excellent mount for graphics or display panels.



CRGP Puck glide.

Saddle

Good for heavy-duty applications, comes with 2 knob rests.



CRSD Saddle.



Custom Extender Bars for curved look.

SHELVES

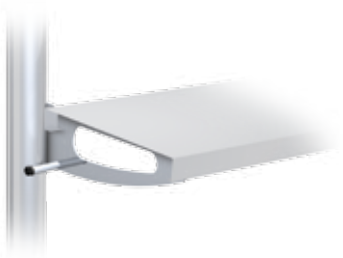


Regular Shelves

10-1/4" deep. Steel powder coated.
Shelves sit flat-cantilevered in front of the uprights.
Shelf brackets required.



CRST-24	24"	4 lbs.
CRST-30	30"	5 lbs.
CRST-36	36"	6 lbs.
CRST-48	48"	8 lbs.



Shelf Brackets for Regular Shelves

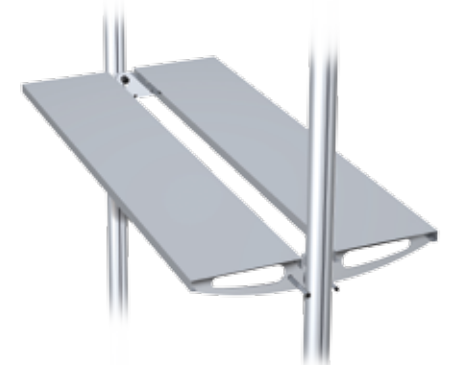
Knob Rest connectors included.



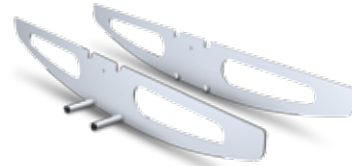
CRSB Set of 2, left & right Single Shelf Brackets.



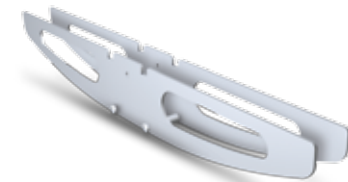
CRDB Double Shelf Bracket, for center upright.



CRSBB Set of 2, a left & right bracket for back to back regular shelves.



CRSBB Set of 2, left & right brackets for back to back regular shelves.



CRDBB Double bracket, set of back to back brackets for center upright.

Inclinable Shelves

12" deep. Angle holders tilt, engaging with uprights in a centered position. Apron on one side.
Steel powder coated. Tightening puck connectors included.



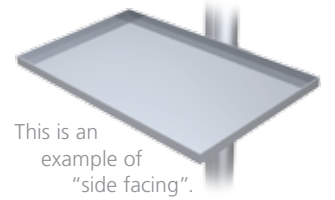
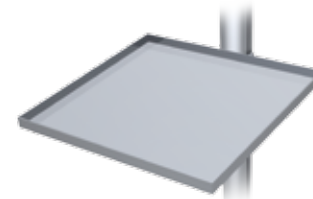
CRIS-24	24"	3 lbs.
CRIS-30	30"	4 lbs.
CRIS-36	36"	4-1/2 lbs.
CRIS-48	48"	6 lbs.



Economical All Metal Shelves

Puck Mount included with each.

These are all "front facing".



This is an example of "side facing".

	Front Facing	Side Facing
4" x 10" Shoe Shelf	CRSTSS	CRSTSS-S
6" Round Shelf	CRST6R	CRST6R-S
6" Square Shelf	CRST6S	CRST6S-S
12" Square Shelf	CRST12	CRST12-S
12" Square Tray	CRSTDT	CRSTDT-S
10" x 16" Shirt Tray	CRSTST	CRSTST-S



TABLES



Clear Acrylic Shelves

Puck connector included with each shelf.



CRRS Round Shelf
3/8" x 12"



CRSF Shoe Shelf
3/8" x 4" x 10"



CRSS Square Shelf
3/8" x 10"



CROS Oval Shelf
3/8" x 12" x 8"

*Tool
Free
Assembly!*

Round and Half Round Shelves

Black and White Melamine or 3/8" White Polypropylene.
Puck connectors included.



CRRM1-B



CRHM1-B



CRRM2-W



CRHM3-W



CRRP3



CRHP3

Steel Tables and Shelves

All with 5/8" silver powder coated finished aprons.
Puck connectors included.



CRE1



CRF1



CRF2



CRF3



CRE2

Squares

CRE1	18"
CRE2	24"
CRE3	30"

12" deep Shelves

CRF1	24" wide
CRF2	30" wide
CRF3	36" wide

Melamine
Specify -W White or -B Black

3/8" White
Polypropylene

	Melamine Specify -W White or -B Black	3/8" White Polypropylene
18" Round	CRRM1	CRRP1
24" Round	CRRM2	CRRP2
30" Round	CRRM3	CRRP3
24" Half Round	CRHM1	CRHP1
30" Half Round	CRHM2	CRHP2
36" Half Round	CRHM3	CRHP3

BRACKETS



Set Joiners

Solid steel brackets join uprights together.
Set of 2. Position where sections meet.



CRC6	60°	CRC5	135°
CRC9	90°	CRCA	Adjustable

Waterfalls

5 slot and 7 slot steel brackets for garment hangers.
Puck connection included.



CRWF5	5 slots	attach uprights	CRWC5	5 slots	attach crossbars
CRWF7	7 slots	attach uprights	CRWC7	7 slots	attach crossbars

Center Garment Brackets & Poles

Heavy wall poles, brackets and puck connectors.



CRCG-2	24"	CRCG-3	36"
CRCG-25	30"	CRCG-4	48"

Extended Garment Brackets & Poles

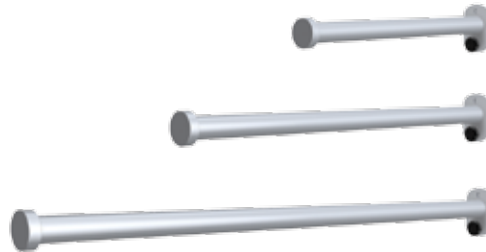
Heavy wall poles, brackets and pucks.
Connectors included.



Singles		Doubles	
CREGS-2	24"	CREGD-2	24"
CREGS-25	30"	CREGD-25	30"
CREGS-3	36"	CREGD-3	36"
CREGS-4	48"	CREGD-4	48"

Customer Arms

Strong, sleek metal arms,
aluminum face-out, connector included.



CRUM1	12" Arm	CRUM2	18" Arm	CRUM3	24" Arm
--------------	---------	--------------	---------	--------------	---------

Connectors



CRLV Locking lever,
spring loaded, insures security.
An upgrade option.



CRKR Knob Rest & glide screw.
CRTP Rest, glide screw, & tightening puck.



CRVX Fixed universal monitor mount.
Knob rests included.



CRPB Plasma Brackets. Set of 2
hang from two crossbars. 20" long,
Universal mounting holes. Weight: 3 lbs.



CRVA Swiveling universal monitor mount.
Knob rests included.

Video

Aluminum Clamps

Beautiful satin anodized, rubber lined jaws, strong binder spring, connector included.



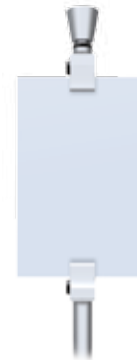
CRVM1
Mounts on side faces front.



CRVM2
Mounts and faces to upright side. Or against crossbars.



CRVM3
Mounts onto graphic rods.



Shown above with 2 **CRVM1**

J Hanging Hook



CRJH J Hook
Hang jewelry, hand bags, etc. Puck connector included.

Steel Literature Holders

Connector included.



CRLF Lit. Holder
Steel 9" x 11-3/4", centered mount.



CRLS Lit. Holder
Steel 9" x 11-3/4", Select left (-L) or right (-R) mount.

Catalog Holder

Connector required.



CRCH Catalog Holder
9" w x 1-1/2" d, clear.

Vase & Holder



CRVH1 Clear glass 3" wide top, tapered, 9-1/2" long. Holder and connector included.

Connector



CRLV Locking lever, Spring loaded, ensures security. An upgrade option.

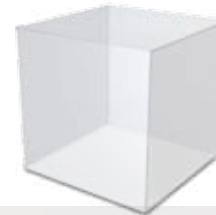
Clear Acrylic Bowl

UV resistant, high impact strength.



CRB168
16" w x 8" d. Includes holder and attachment.

Vitrine



CRVTR Clear acrylic five sided box. 11-3/4" x 11-3/4" x 11-3/4". Made to sit on 12" square tray - pg. 34.

Frosted Shelf



CRFS 11-3/4" x 11-3/4" x 11-3/4". Frosted acrylic shelf, side mounts, connectors included.

FRAMES

creo

Tool Free
Assembly!

Aluminum Frames

Satin silver frames, open 2 sides, 3/16" full top entry slot. Multiple angle holder and puck connector included.

CRPX1	8-1/2" x 11"	CRPX4	14" x 22"
CRPX2	11" x 14"	CRPX5	22" x 28"
CRPX3	11" x 17"	CRPX6	24" x 36"

Indicate mounting -L Left -R Right -C Center

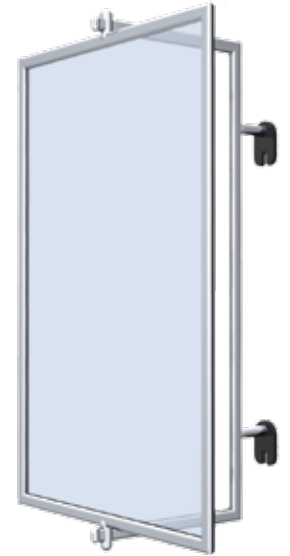


Swivel Frames - Side Swivels

Modern frames swivel for multi-angle graphic presentations. Connector needed to hold to pole.

CRSV1	22" x 28"
CRSV2	24" x 36"
CRSV3	30" x 40"

Other sizes available.



Adjustable to any angle.



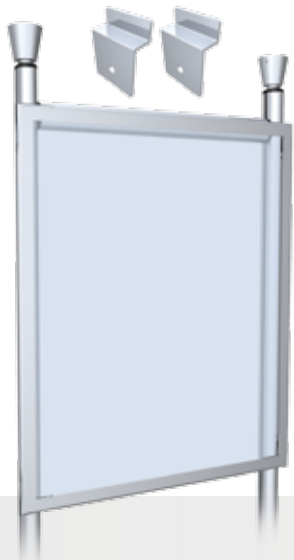
Special Order:

To hang frames from a crossbar, Z Brackets can be added in lieu of angle brackets at no additional charge.



Easy-Open Aluminum Snapframes

1-1/4" wide, 9/16" deep. Accepts posters and paper signs to 1/32" thick. Rigid opaque plastic backing, Matte overlay lens included. Multiple angle holder and connector included.



CRME7	22" x 28"
CRME9	24" x 36"
CRME10	30" x 40"

Indicate mounting
-L Left -R Right -C Center



Live area:
3/8" margin is covered by frames on this page.

Top mount swivels available, up to 11" x 17" max.



OPTIONS



Sample Kits

Great for demonstrating to clients CREO's quality level and ease of use.
Most of our popular attachments are included.



CRQCS Single Pole Classic
CRPOSS Single Pole Pos



CRQCD Single Pole Classic
CRPOSD Double Pole Pos



CR50 50 watt light attaches to top of cone topper.



CR200 200 watt light includes mounting hardware & attaches anywhere along crossbars.
Connector required.

Hard Cases

Many hard cases with built-in wheels are stocked so your CREO project can be properly protected and shipped.



Custom Colors

Custom finishes available for Uprights & Bases.
Price on application.

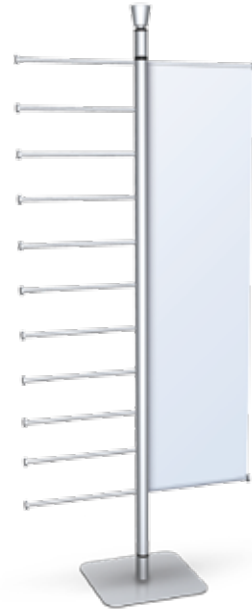
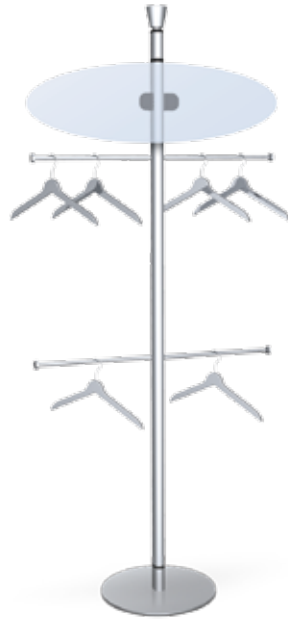


HC3919	39" x 19" x 5-1/2"	20 lbs.	Thermoformed
HC4526	45" x 26" x 9-1/2"	28 lbs.	Thermoformed
HC5325	53" x 25" x 10"	34 lbs.	Thermoformed
HC5315	53" x 15" x 12"	25 lbs.	Thermoformed

HC4213	42" x 13" x 5"	11 lbs.	Fabricated Board
HC6317	63" x 17-3/8" x 12"	24 lbs.	Fabricated Board
HC6326	63" x 26" x 9-1/2"	30 lbs.	Fabricated Board
HC4840	48" x 40" x 45"	115 lbs.	Thermoformed

SINGLE POLE

creo



GALLERY

creo



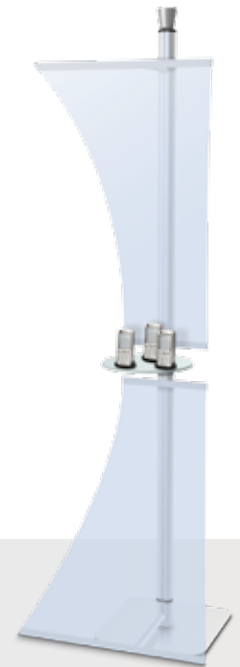
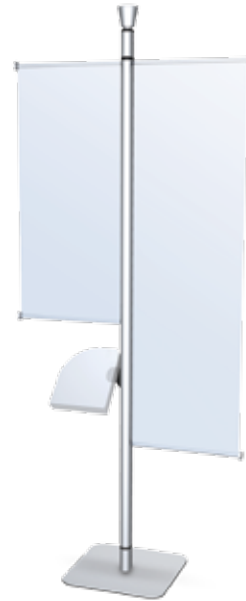
SINGLE POLE

creo



GALLERY

creo



PARTITION

créo



GALLERY

creo



TRADESHOW

creo



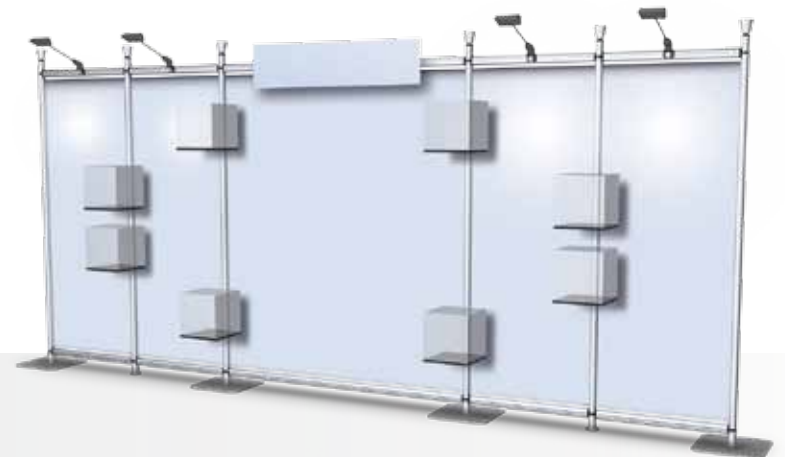
10' EXHIBITS

creo

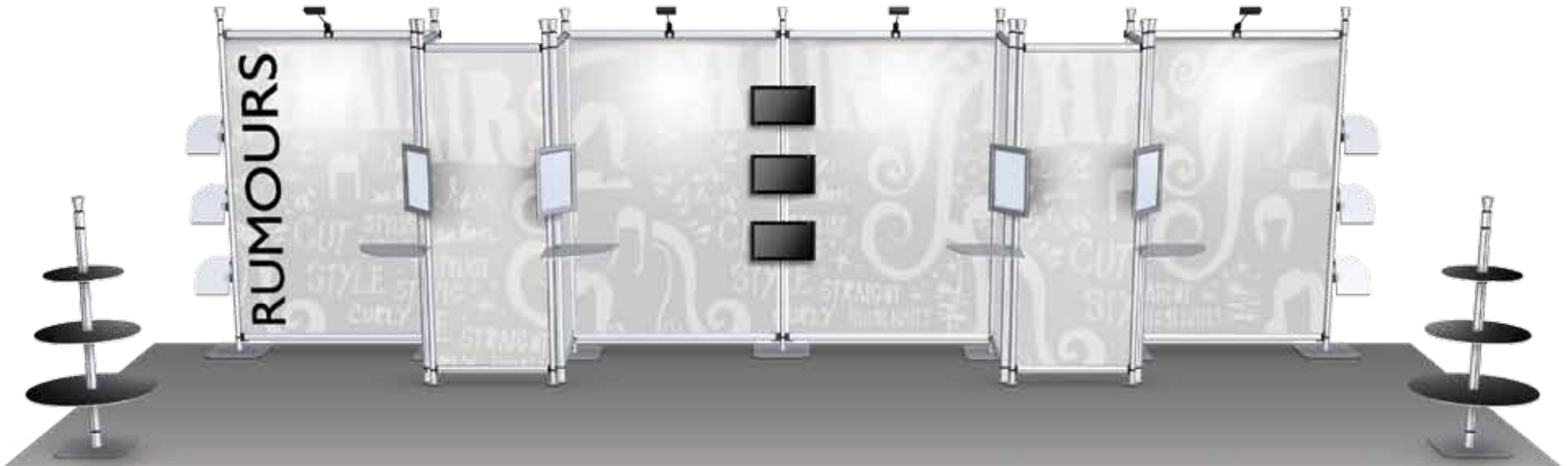


TRADESHOW

creo



GALLERY **créo**



TRADESHOW

creo



Large
Booth Layouts

STRUCTURES

creo



Portable
Stores



Custom
Structures

crēo