

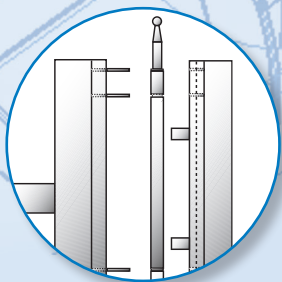
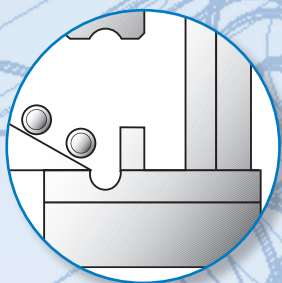
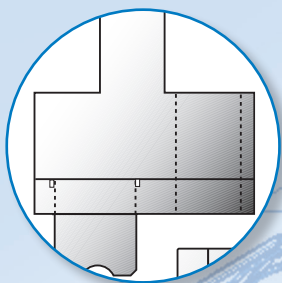
O.E.M. Telescopic Aluminum Tube Assemblies

O.E.M. is the core competency of our company

As a former photographic tripod & lighting stand manufacturer, we can offer you design and manufacturing services on a wide range of components.

Rely on 94 years of innovative solutions, already tooled in many cases, to help you achieve success in your product development.

- Folding Stands
- Supports & Arms
- Metal Bases
- Clamps, and other devices



Our specialty is the manufacture of aluminum telescopic tube assemblies.

- Close tolerance high tensile strength round tubing with .038" walls.
- Telescopes in 1/8" increments (i.e. 7/8" fits into 1", 1" fits into 1 1/8", etc.).
- Tube diameters from 3/8" to 1-1/2", Tubes can be cut to any length.
- Assemblies can be from 2 sections up to 10 sections, depending on lock style.
- Stops and overlaps provide bearing and keep legs from pulling apart.
- Longer overlaps for extra long assemblies can provide extra bearing.

Our Engineering Department can work with you to design & produce the assembly that will best insure your project's success.

Raúl Fardín
Vice-President Manufacturing

Larry Rubin
President & CEO

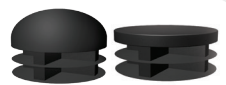
Engineering

Telescopic Poles | Extension Poles

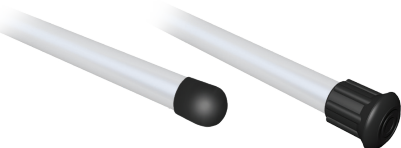
Product Design Guide

visit www.testrite.com/browse/telescoping-aluminum-tubing/

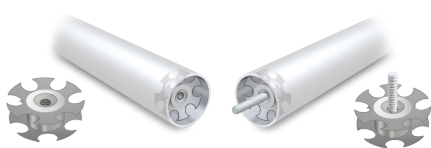
Tube Assembly Ends, Attachments & Accessories



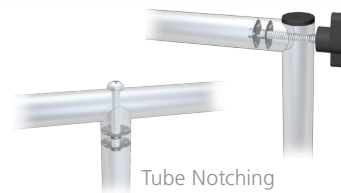
Dome & Flat Insert Caps



Rubber Bumpers



Female & Male Threads



Tube Notching



Bending



Leveling Glides



Casters



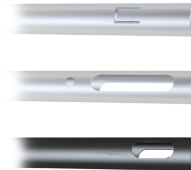
Handles & Grips



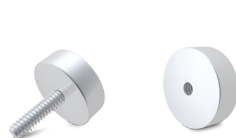
Leg Spikes



Expanded & Indented Lines



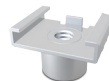
Piercing



Male & Female Metal Pucks



PROA1



PROA5



FSA8

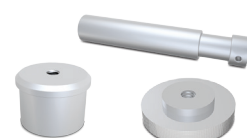


Photo Fittings & Screw Machine Parts



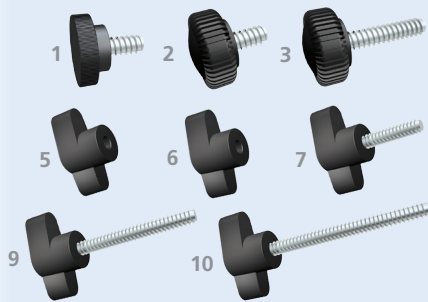
Mounting Flanges



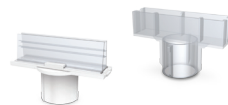
Swivels

Knobs:

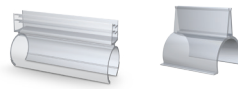
Phenolic heads, steel threads



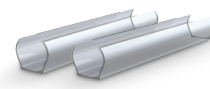
KN1	3/4" Rd.	1/4-20 x 3/8" Long
KN2	1" Round	1/4-20 x 3/8" Long
KN3	1" Round	1/4-20 x 3/4" Long
KN5	S Shaped	10-24 Female
KN6	S Shaped	M-6 Female
KN7	S Shaped	1/4-20 x 7/8" Long
KN9	S Shaped	1/4-20 x 1-9/16" Long
KN10	S Shaped	1/4-20 x 2-3/8" Long



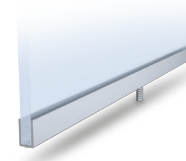
Sign Holders



3/4" & 1"



Snap on Adapters



Sign Channels



Yokes



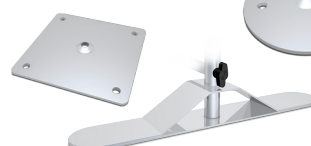
C Clamps



VM Clamps



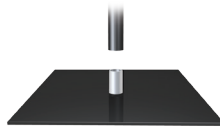
Handles & Grips



Stamped Mounts



Round



Square



Magnetic



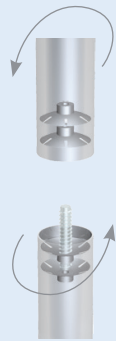
Laser Cut Bases



Tripodal

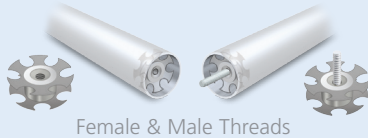
Bases Many styles available, made to specifications.

O.E.M. Telescopic Aluminum Tube Assemblies



Tubes Screw Together...

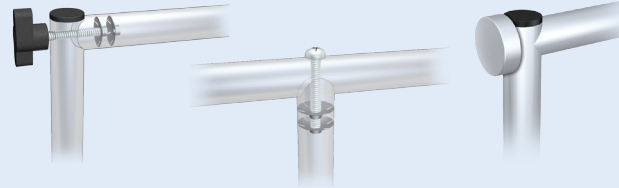
Join tubes together using cost-effective threaded connectors.



Female & Male Threads

For heavier applications, solid aluminum threaded bushings can be supplied.

Perpendicular Tube Joints



Stocked in all diameters, these connectors, along with die cut radiused tube ends and with either a knob, screw, or puck, offers outstanding strength, cost effective 90° connections.



Once in screw joints are extremely strong.

Non-Rotational (NR) option

NR feature, allows legs to telescope, but not to turn, keeping constant their relative orientation. Feature comes standard with the F style "Spring-Button". With the A lock it helps prevent unintended unlocking. Not available for lock styles C & D.



Style A-NR



Style E-NR



Style AF-NR

Swaging

An economical way to form leg ends, so one leg nests into another. A spring button can be an option. Swaging features close tolerances and provides great strength. We are not set-up for all diameters yet.



Shown with and without optional Spring Button

Finish Choices:

Etched & Clear Anodized

Etched matte look and clear anodized. Beautiful satin finish. Cost effective.

Black Matte Anodized

Non-reflective, handsome satin black.

Mill Finish

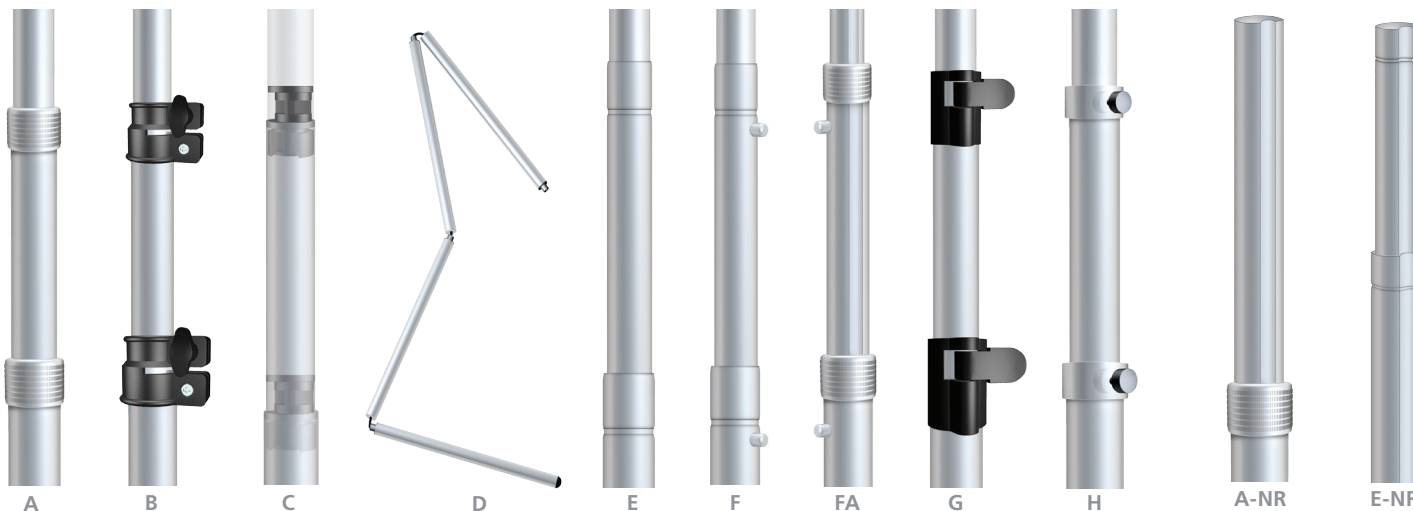
Polished and shiny, unsealed, economical mill finish.

Other Colors

Specify: Many anodized and powder coated options are available as well as PMS Color matches.

O.E.M. Telescopic Aluminum Tube Assemblies

"RFQ" Request For Quotation Worksheet: Make copies for future projects



Finishes

Etch & Clear or Black Matte Anodized, Mill Finish.

-NR Option

Non-Rotational Allows legs to telescope, but not to turn.

Leg Attachments/Ends

Male/Female Threads, Rubber Bumpers, Bends.

Accessories

Ball Swivels, Mounts Channels, Flanges.

Bases

Square, Round Discs, Tripodal, Magnetic.

- A** Aluminum "Clutch" Lock with knurl. Trouble-free, all metal.
- B** "Split Collar" locks very securely with ergonomic knob.
- C** Internal "Cam" lock, opens with simple quarter turn.
- D** "Presto" Shock Cord, opens by itself. One constant diameter.
- E** Telescopic & Captive, non locking.
- F** "Spring-Button" opens to specific positions. NR (non rotational) feature included. 3 sections maximum.
- FA** Same as F, but with an A Clutch Lock for extra bearing.
- G** "Snap Locks". Ergonomic and economical!
- H** Set knob, specially designed, non marring and captive.

-NR Option Non-Rotational
Allows legs to telescope, but not to turn, not for lock styles C or D.

Contact: _____

Company: _____

Address: _____

City: _____ State: _____

Zip: _____ E-mail: _____

Phone: _____ Fax: _____

5. Diameters (check off all that apply):

- ☐ 3/8" ☐ 1/2" ☐ 5/8" ☐ 3/4" ☐ 7/8" ☐ 1" ☐ 1-1/8" ☐ 1-1/4" ☐ 1-3/8" ☐ 1-1/2"

8. Notes:

1. Leg Styles and Diameter Ranges (check all you would like quoted):

- | | |
|--|--|
| <input type="checkbox"/> A Clutch (3/8"–1-1/2") | <input type="checkbox"/> E-NR (1/2"–1-3/8") |
| <input type="checkbox"/> A-NR (1/2"–1-3/8") | <input type="checkbox"/> F Spring-Button (5/8"–1-3/8") |
| <input type="checkbox"/> B Collar (1/2"–1-1/2") | <input type="checkbox"/> FA Spring-Button A Clutch (5/8"–1-3/8") |
| <input type="checkbox"/> B-NR (1/2"–1-3/8") | <input type="checkbox"/> G Snap Collar (1/2"–1-1/2") |
| <input type="checkbox"/> C Cam (1/2"–1-1/4") | <input type="checkbox"/> G-NR (5/8"–1-3/8") |
| <input type="checkbox"/> D Shock Cord (3/8"–1-1/2") | <input type="checkbox"/> H Set knob (3/8"–1-1/2") |
| <input type="checkbox"/> E Non-Locking (3/8"–1-1/2") | |

2. Length opened: _____ 3. Length closed: _____ 4. Number of sections: _____

6. Finish:

- ☐ Etched & Clear Anodized ☐ Mill ☐ Black Matte Anodized ☐ Other Color

7. Quote Quantity:

Production Quantity(s): _____

Sample Quantity: _____

Drawings,
blueprints,
samples
welcome

For fast quotation, copy, fill out and fax to 201-543-2195, or visit www.testrite.com/client-services/request-for-quote/