

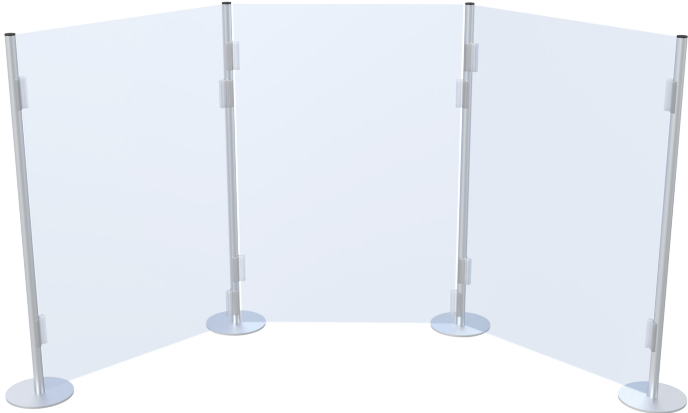
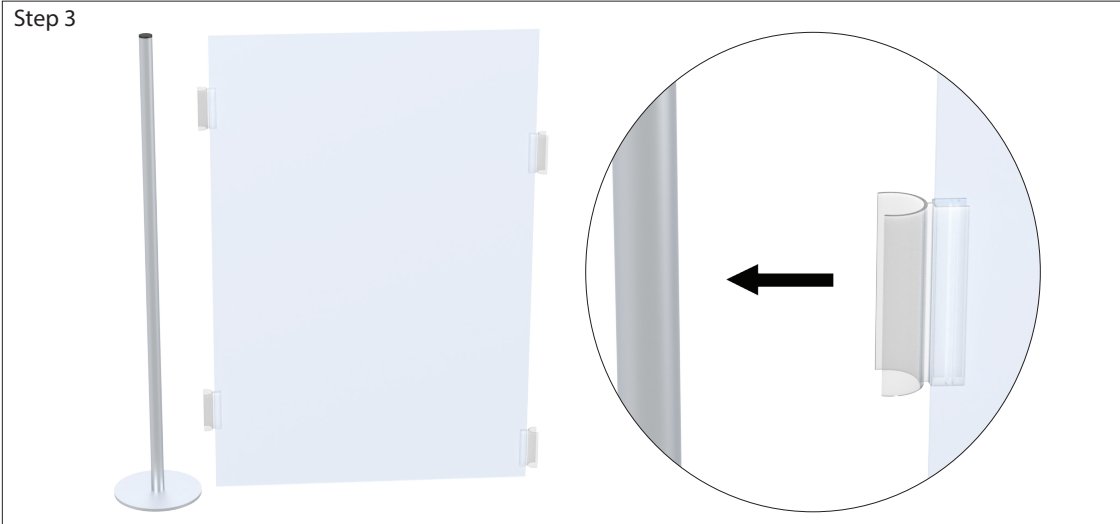
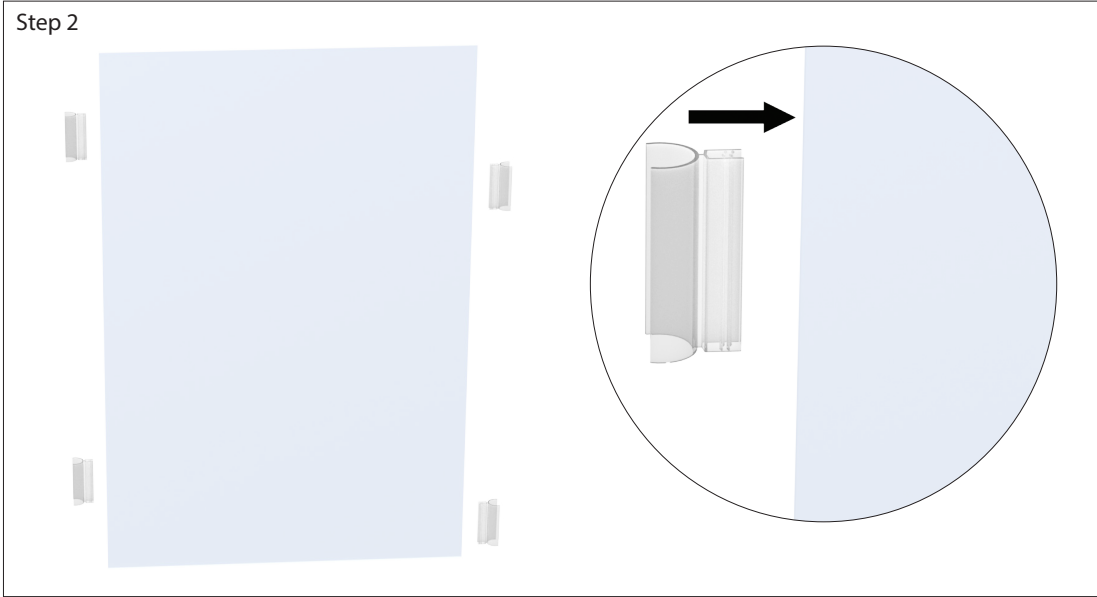
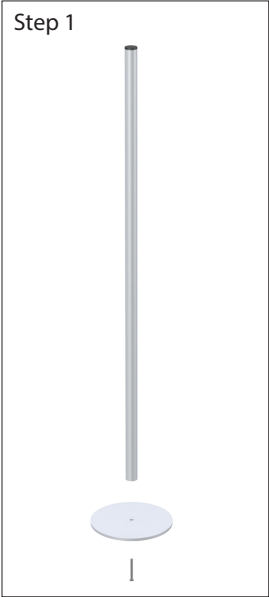
Table Top Exhibit

Applicable Products:

- 1. Attach the upright to the base using the screw provided.
- 2. Attach the clip to the graphic.
- 3. Snap on the clip and graphic to the uprights.
- 4. Repeat steps for additional graphic sections.

- PVT1
- PVT2
- PVT3
- PVT4

NOTE: Model shown below may differ from your model. Although the number of upright sections may change, assembly instructions remain the same.



PVT3 shown