

Visual Merchandising (Creo)

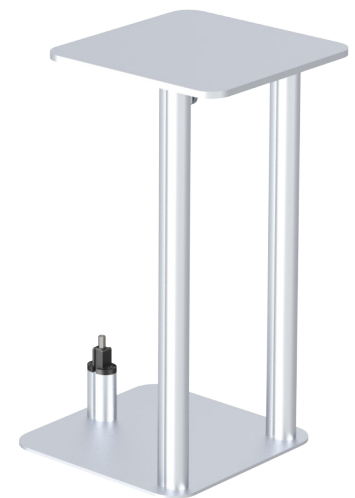
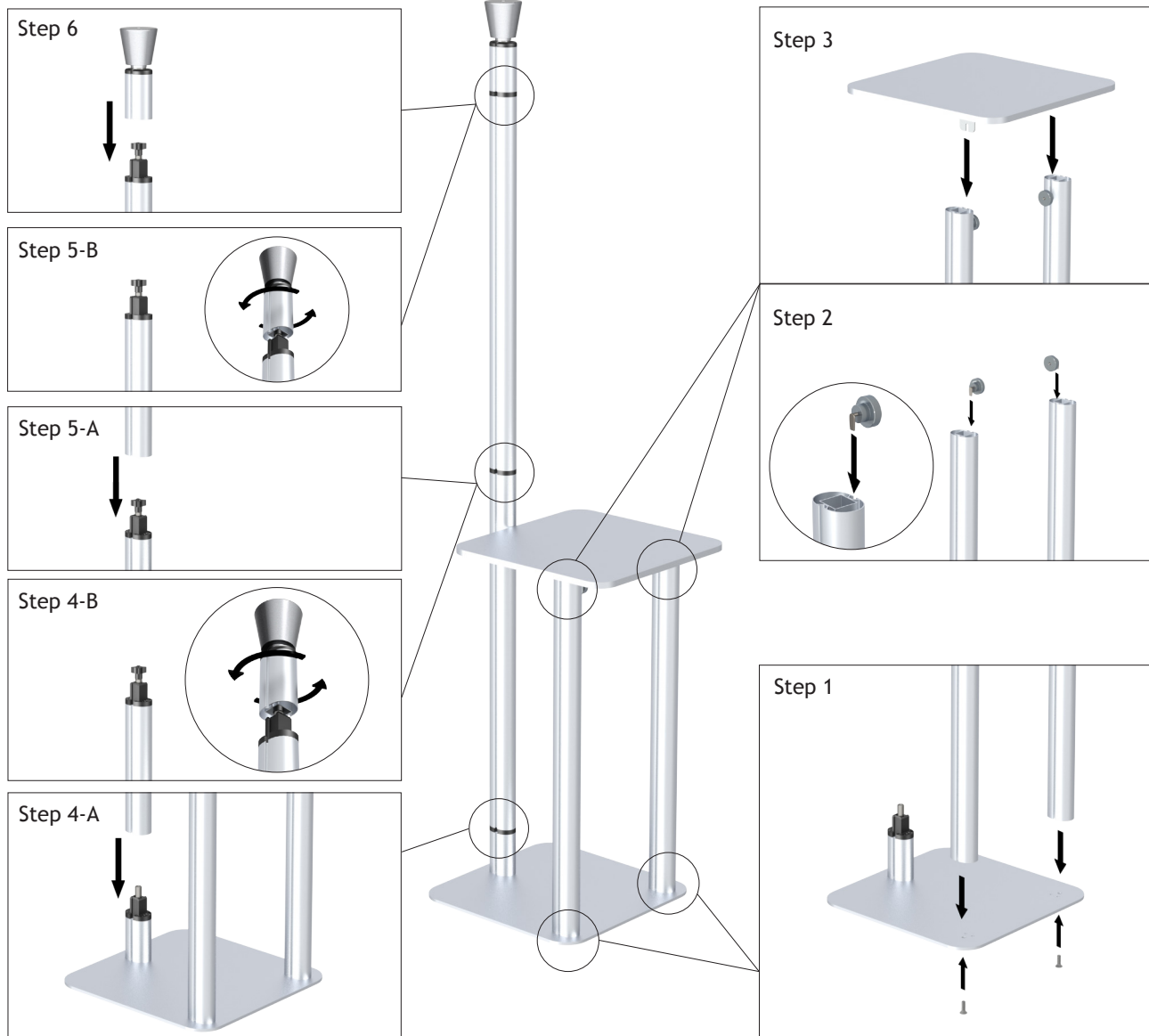
1. Attach front uprights to base, using hex key and screws provided.
2. Insert puck and glide screws into channel of uprights.
3. Position shelf onto glide screws and tighten puck to secure shelf.
4. Slide rear lower upright over base upright and tighten to secure using top as tightening tool.
5. Slide rear upper upright over lower upright and tighten to secure using top as tightening tool.
6. Slide top over upper upright and press firmly downward to secure. If top has cone or knob, turn cone or knob to fully secure.

Applicable Products:

Kiosk Base

CRKB1 (Single)

CRKB2 (Double)



CRKB1 shown